





Jörg M. Dialer

bilderzyklus sergej rachmaninow
das grosse abend- und morgenlob
vesper op. 37

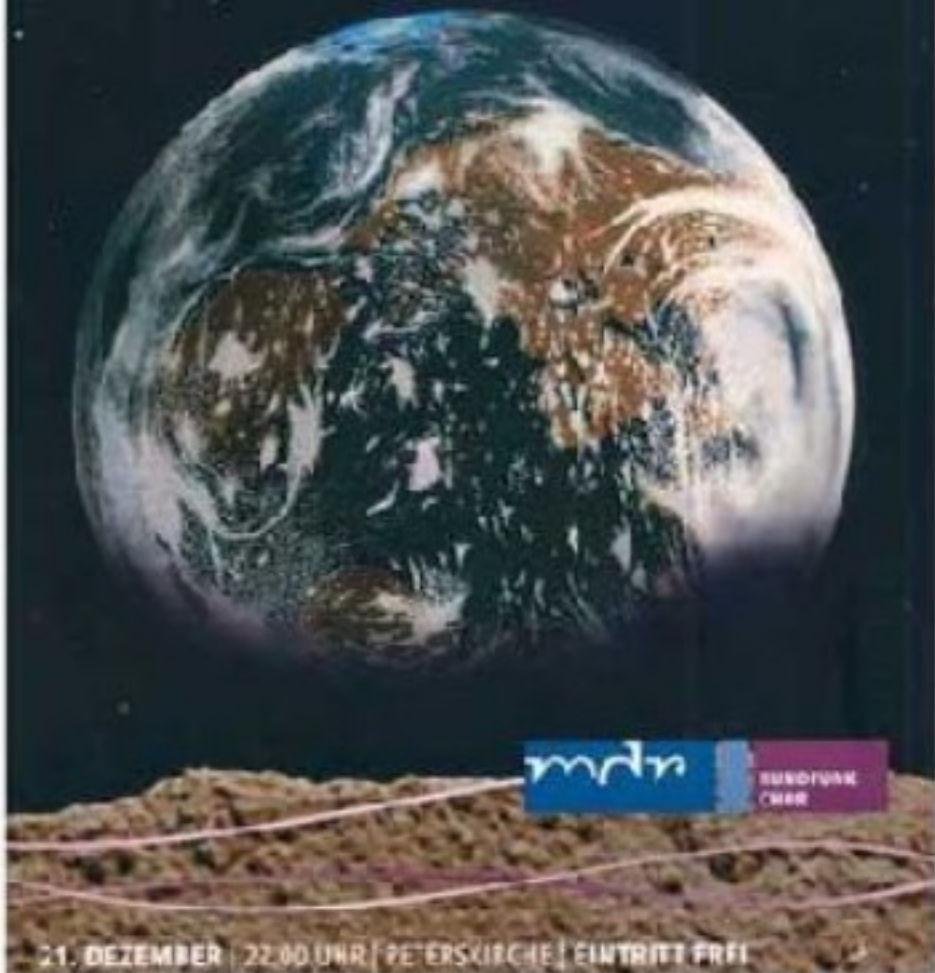
HOWARD ARMAN

NACHTGESANG 2

RITUALE | POESIE | MUSIK

SERGEJ RACHMANINOV

«DAS GROSSE ABEND- UND VORMORGEN» VESPER OP. 37



mdr

BRUNNEN
C 188

21. DEZEMBER | 22.00 UHR | PETERSKIRCHE | EINTRITT FREI



V

50 x 150
öl auf leinwand



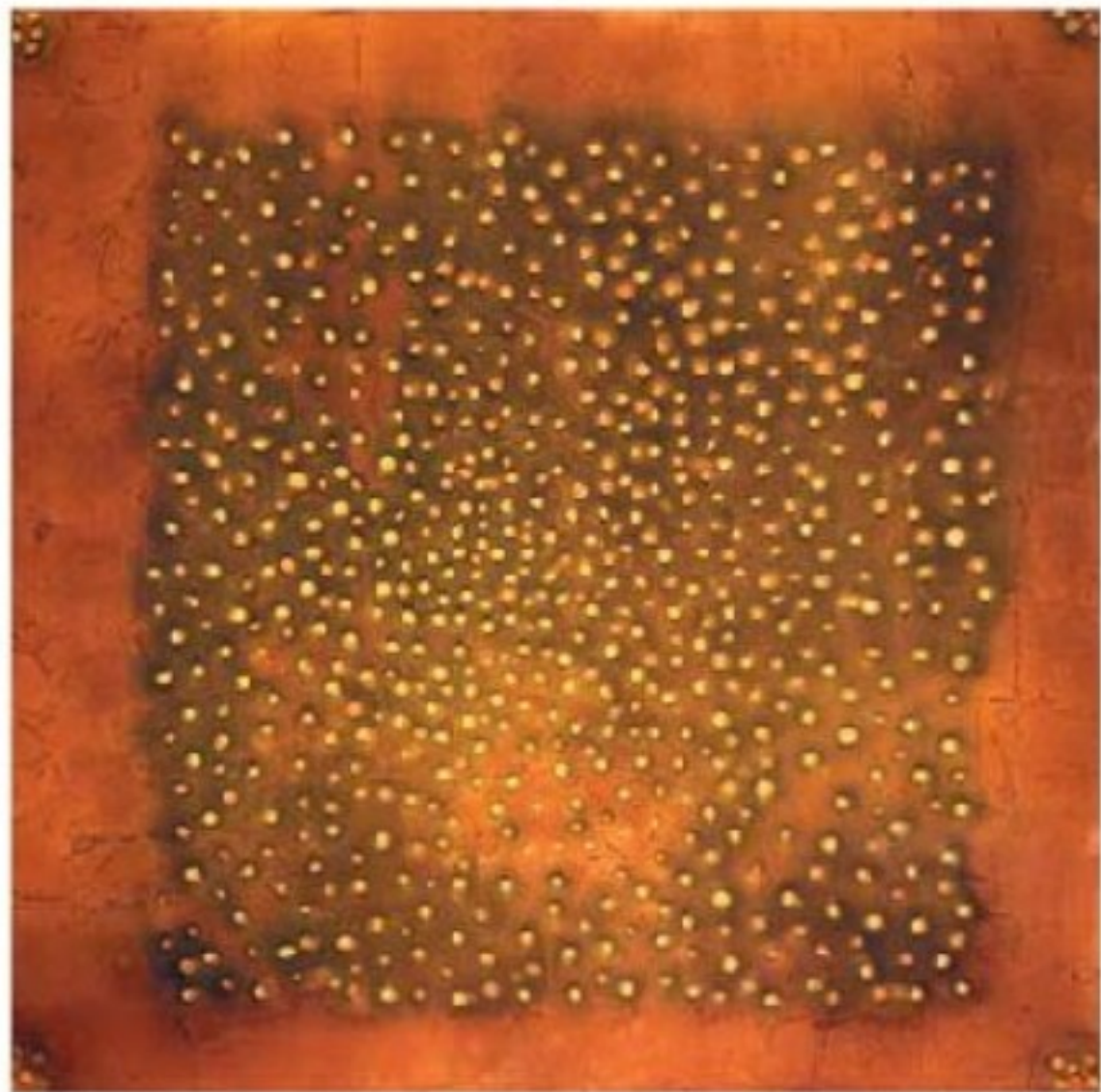
VI

50 x 150
öl auf leinwand



VII

50 x 150
öl auf leinwand



VIII

50 x 150
silikon auf goldholz



X

50 x 150
öl auf leinwand



IX

50 x 150
öl auf leinwand



XI

50 x 150
öl auf holz































XII

50 x 150
öl auf leinwand



tropar II

50 x 150
öl auf leinwand





marienlob

50 x 150
öl auf leinwand









THE
MOUNTAIN
VIEW
SCHOOL





















tropar I

150 x 150
öl auf holz















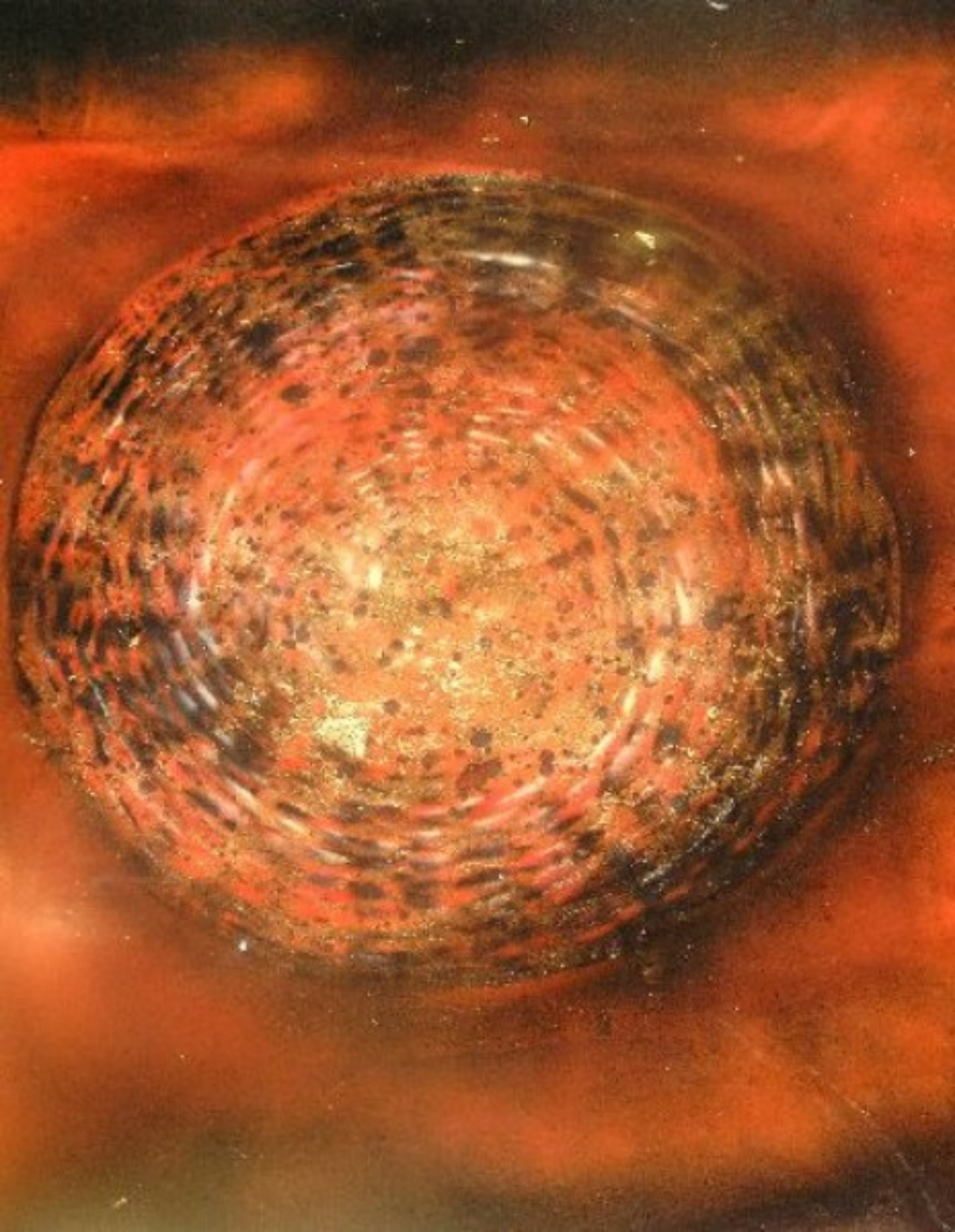




























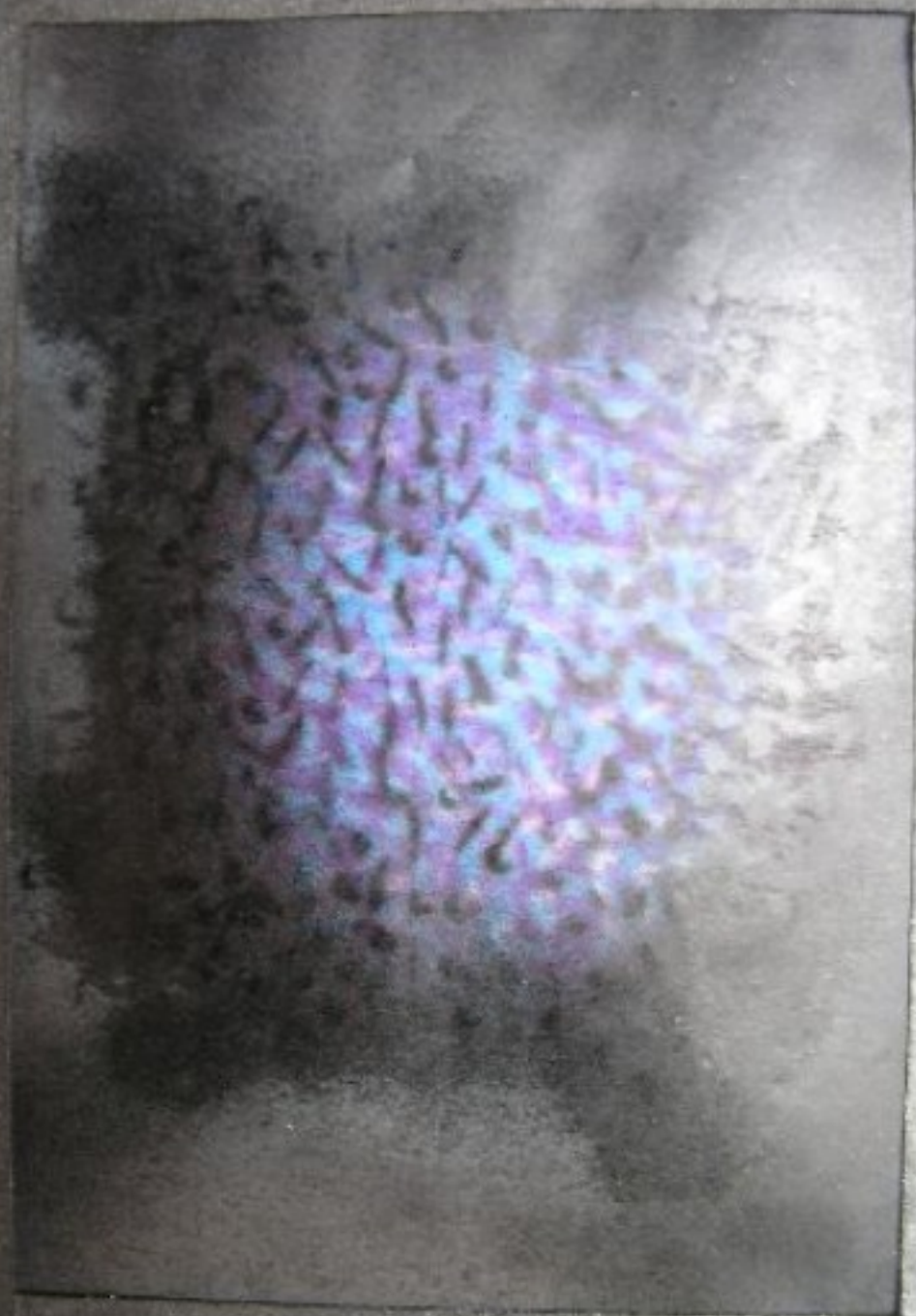




















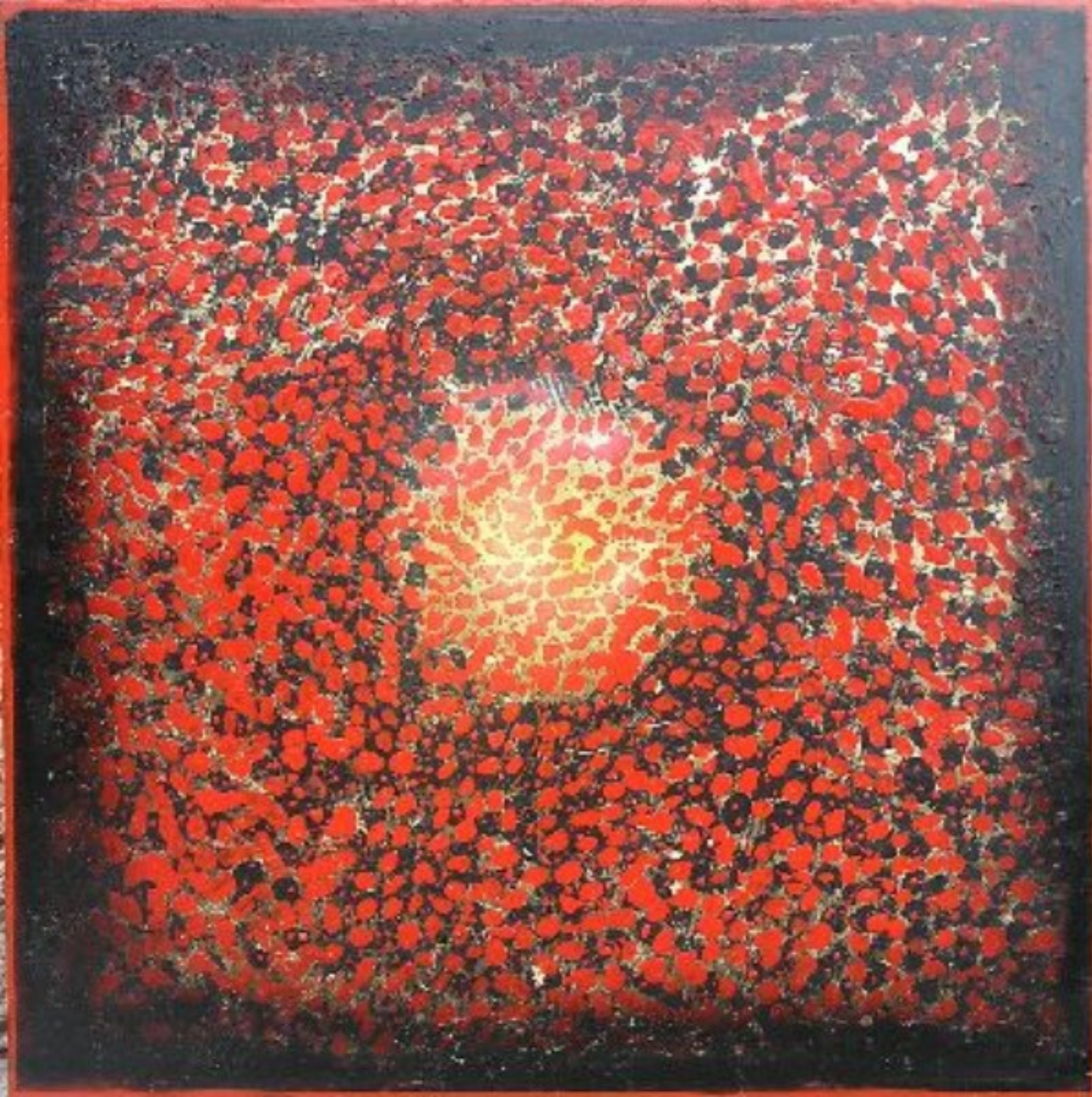






























ROPPERSTUB'N



LANDGASTHOF



ROPFERSTUB'M



LANDGASTHOF















Kröll
Käse & Brot

Handwritten text on a decorative sign

Handwritten text on a circular sign



Kaffe

Kroll

Austria
Salzburg

Kroll
GRIS & STORAGE

The image shows a detailed view of a classical stone doorway set into a wall of horizontal siding. The doorway is topped with a decorative pediment featuring a central keystone. Above the pediment is a wide, shallow shelf supported by two ornate brackets. At the top of the image, a window with a dark frame is visible, flanked by two white columns. The name 'SPECKBACHER' is carved in large, capital letters on a stone lintel above the doorway. The entire structure is made of light-colored stone or concrete.

SPECKBACHER



HOFER













































TRUST

€















































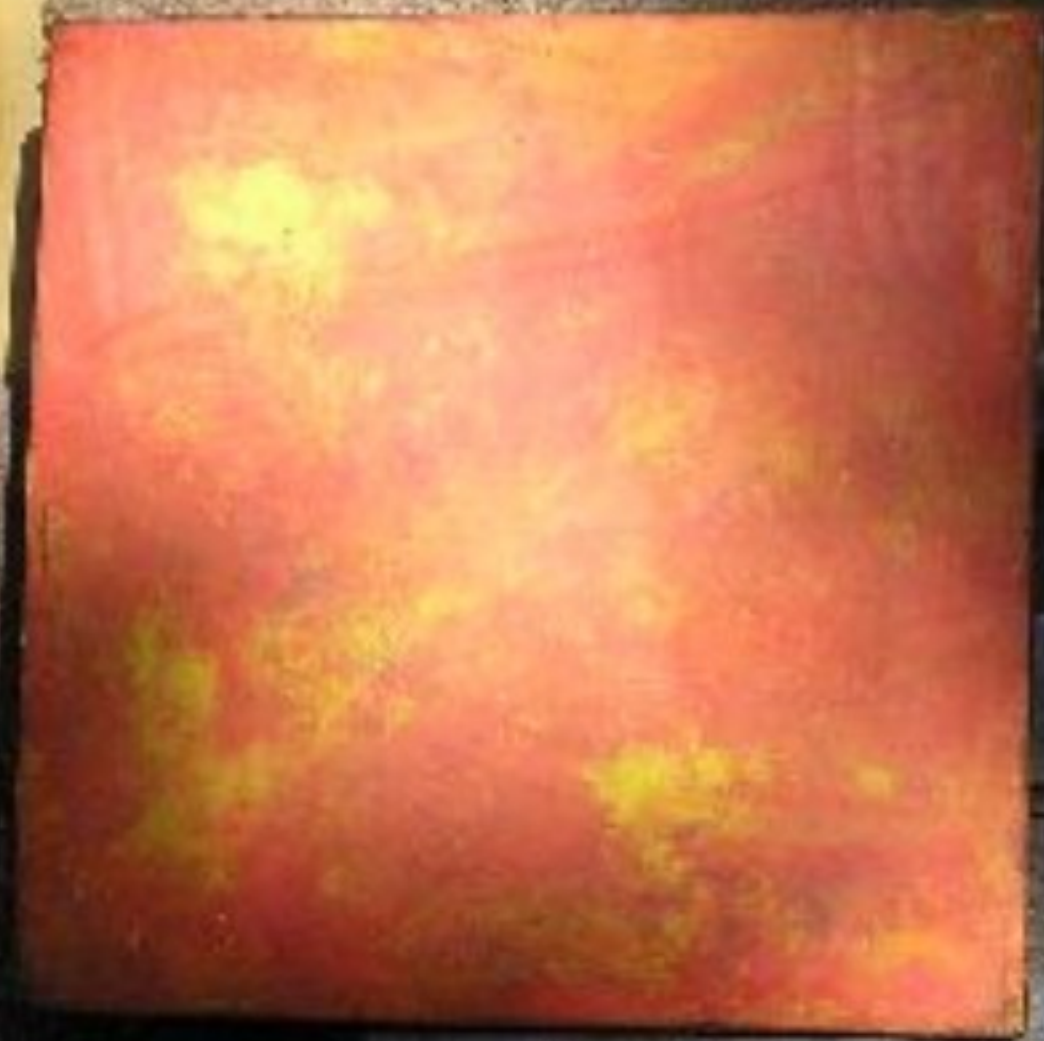














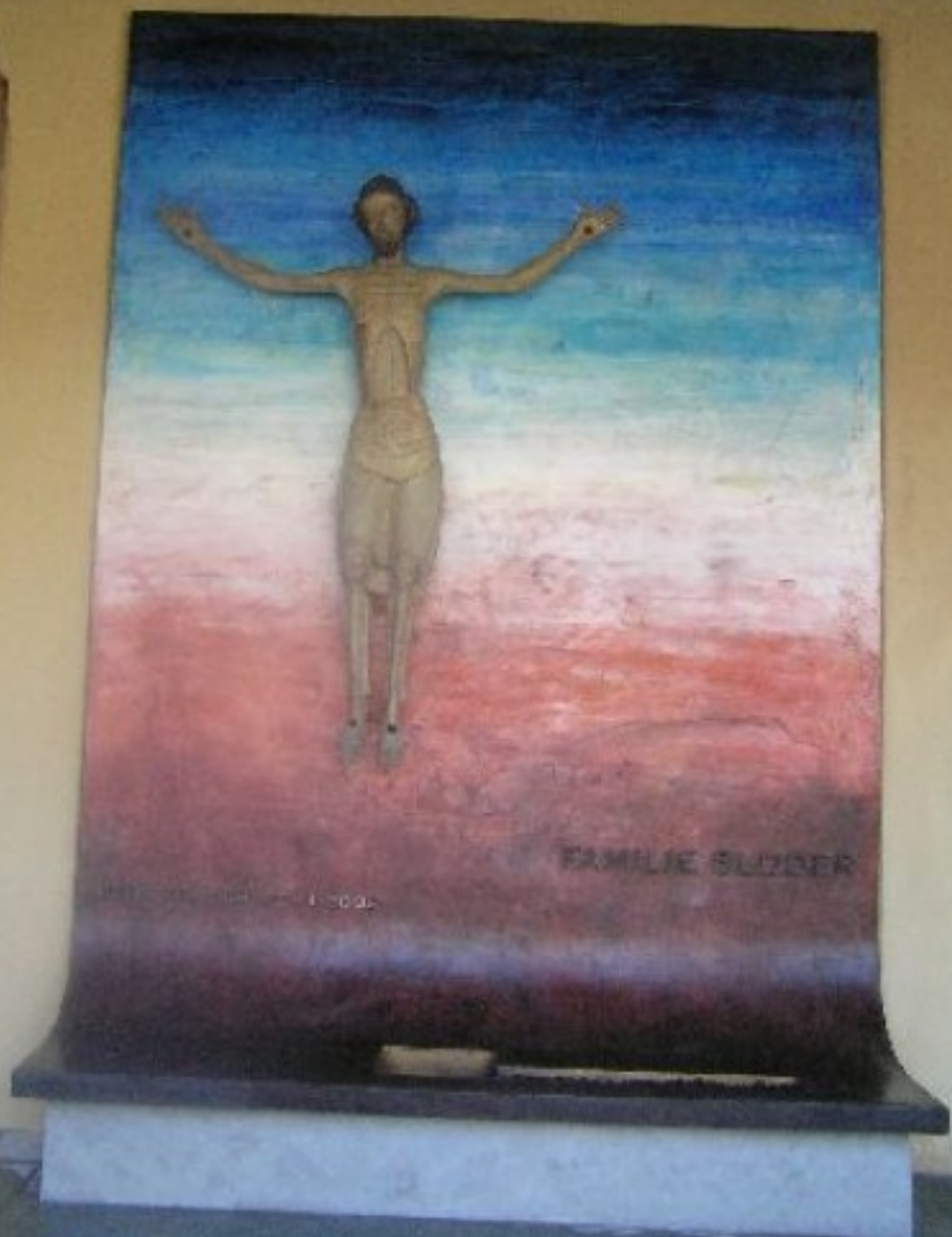




63



811



FAMILIE SLIJZER

1998









